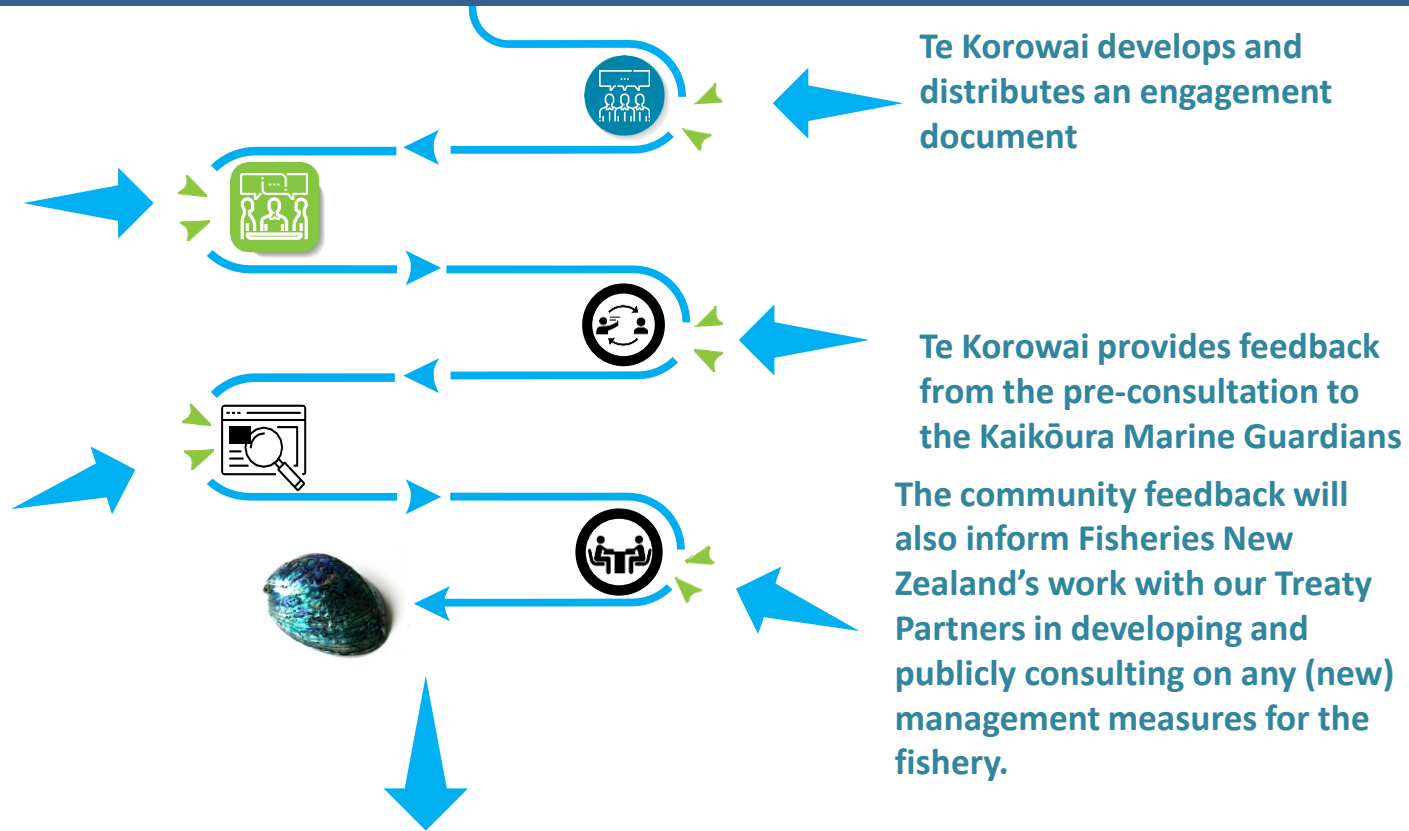


Where are we now? Pre-consultation phase

Te Korowai carries out pre-consultation with the community on potential options for re-opening the Kaikōura recreational and commercial shellfish and seaweed fisheries

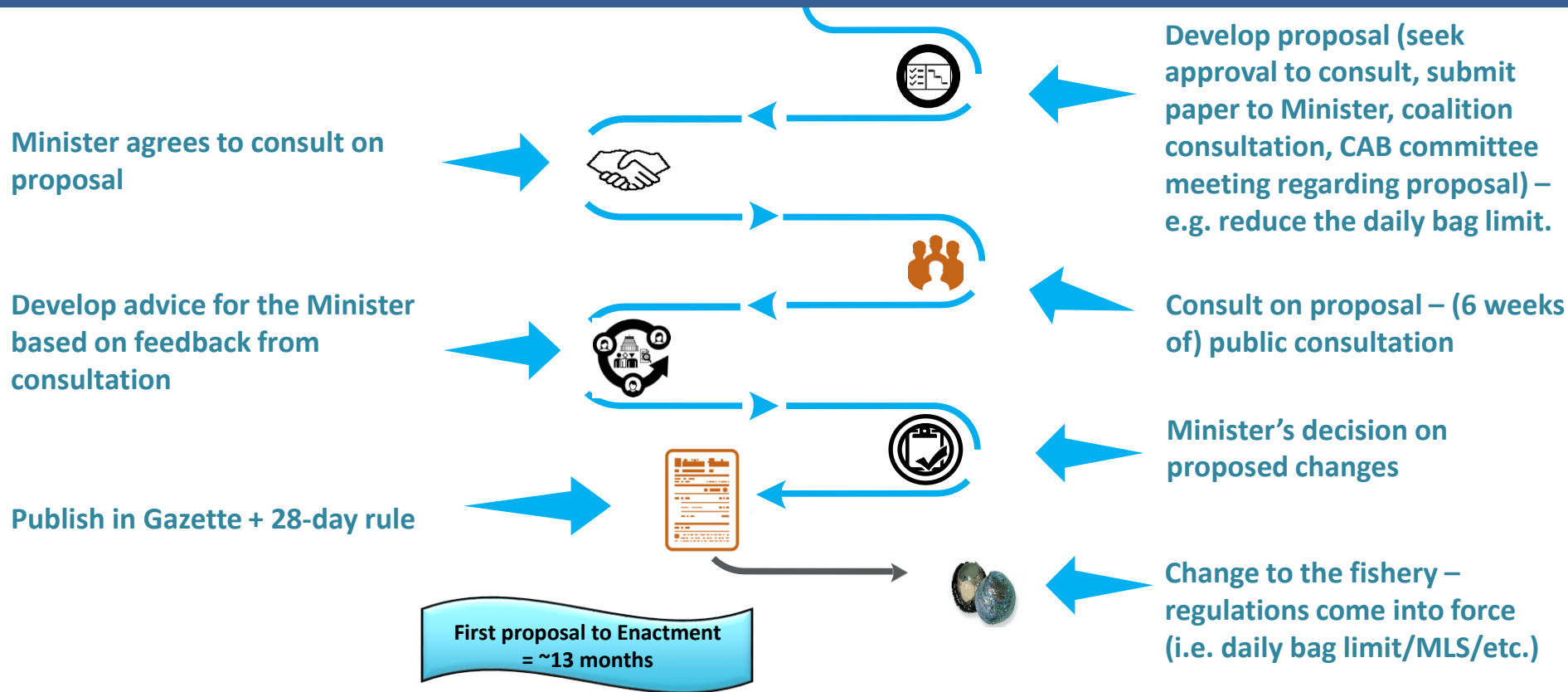
Kaikōura Marine Guardians provide advice to the Minister on their recommendations



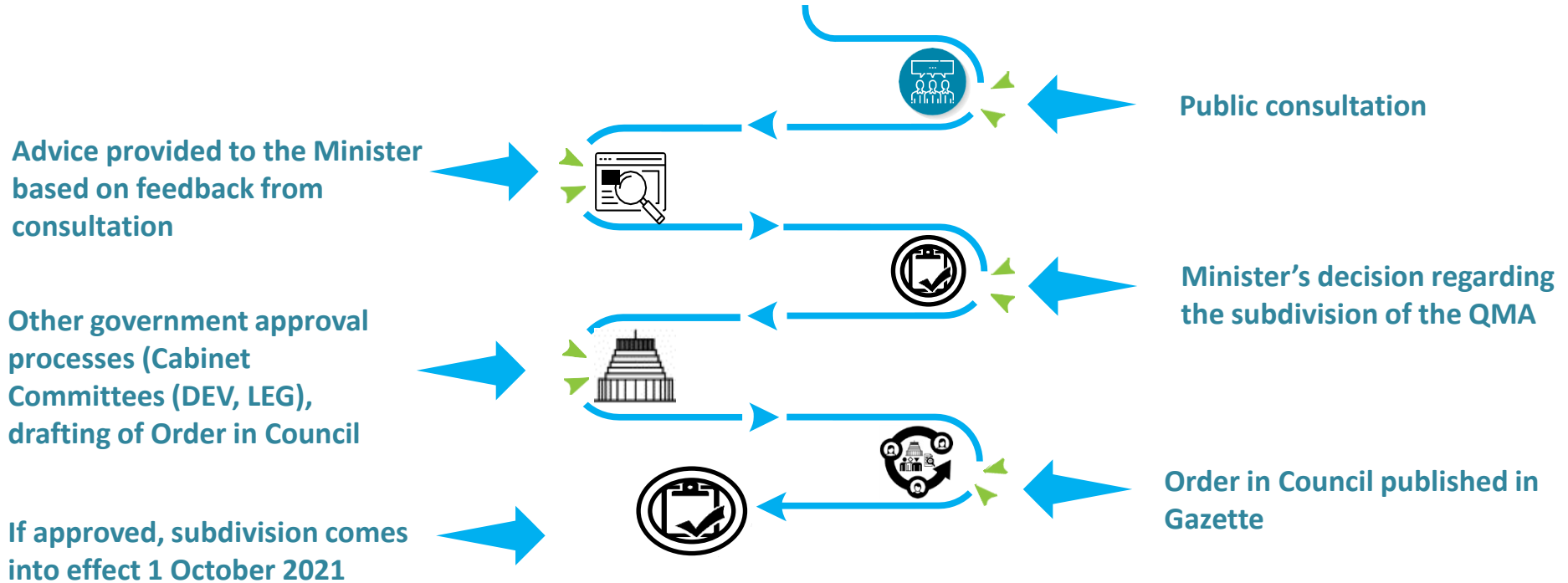
Fisheries New Zealand

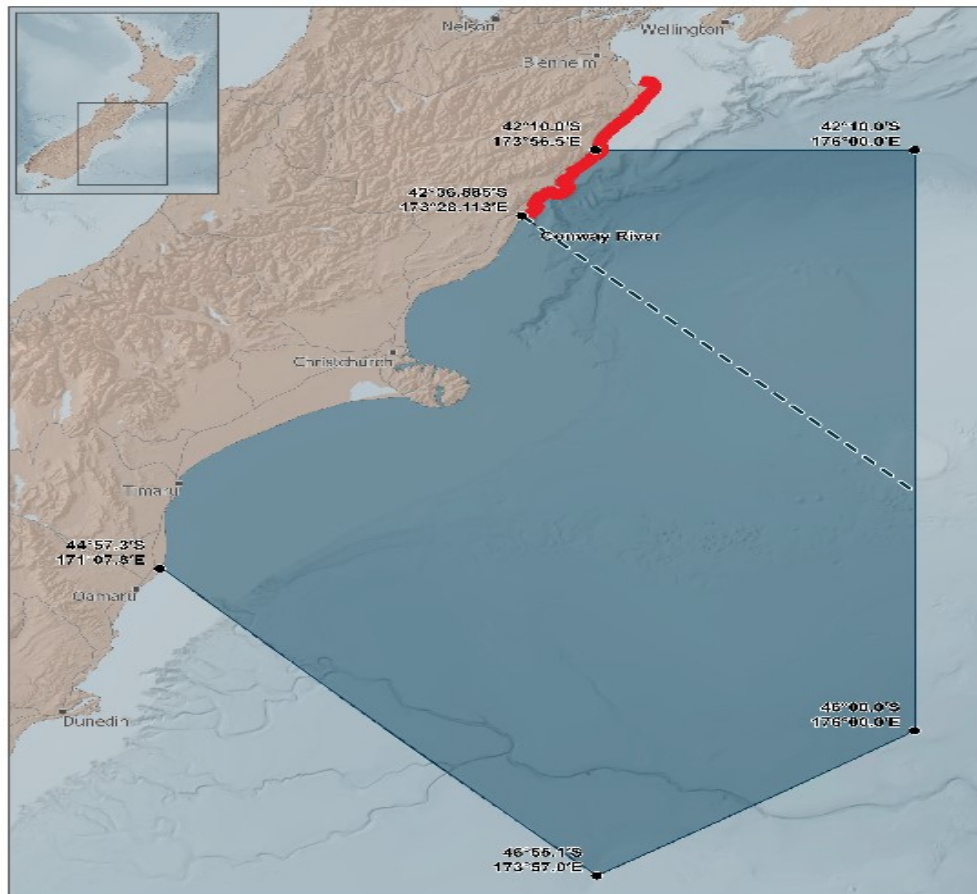
Tini a Tangaroa

Regulatory Amendment Process



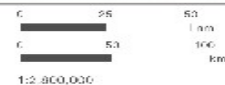
PAU 3 QMA subdivision





**PAU3 QMA Boundary
Proposed Subdivision**

-  Proposed Subdivision
-  PAU3 QMA
-  Sealion and Shellfish (including Scamper and Rock Lobster) Take Prohibited



Date: 27/12/2010
 Produced by: Spatial Intelligence
 Refer to: 130322
 Coordinate System: WGS 1984 Meridian 41

Data Attribution:
 This map uses data sourced from
 LINZ and NIWA's under CC-BY.



Fisheries New Zealand

Tini a Tangaroa

Further research

Fisheries New Zealand is also considering funding some modelling work to combine our coastal monitoring with hydrodynamic models (funded by the Moana Project an MBIE funded project) and some related genetic information.

This could potentially enable us to predict the implications of the reopening on both the adult paua stock, and on the availability of recruits.

This would include the impact of changed public access points given the new coastal road layout.



